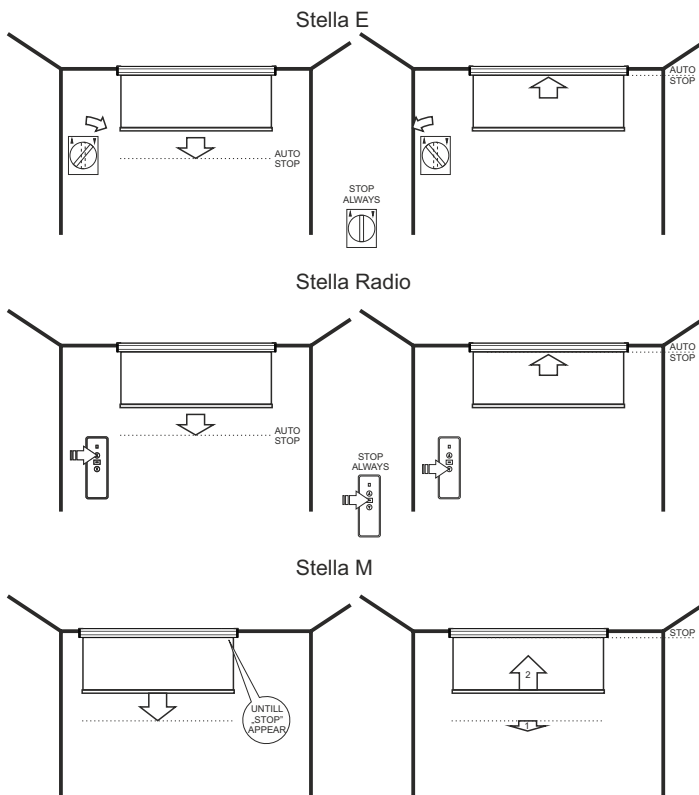
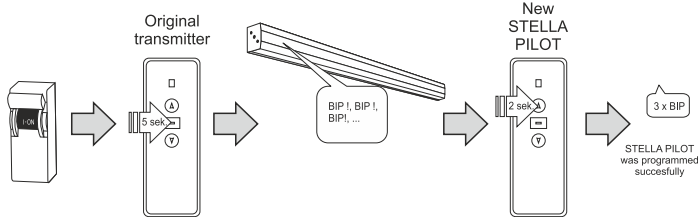


5. Screen operation



6. Programming of an optional STELLA PILOT transmitter

!!! Caution !!! Transmitter supplied with the STELLA-Radio screen was programmed at factory

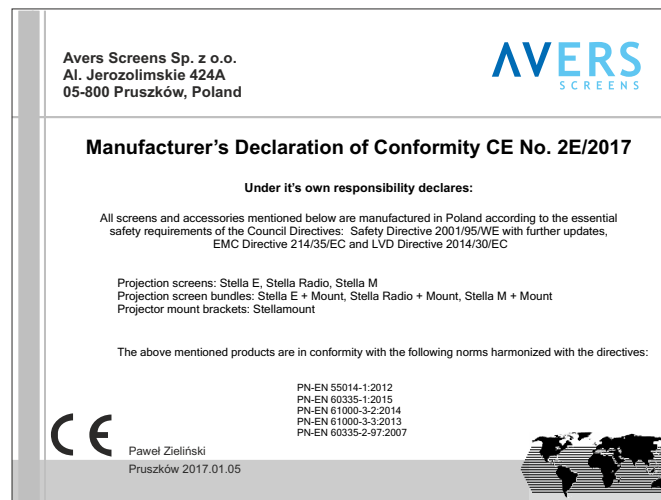


Manufactured after 13.08.2005

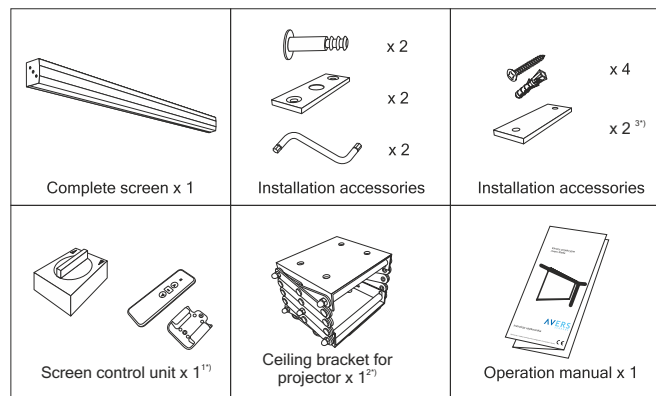
This symbol on the products and/or accompanying documents means that used electrical and electronic products should not be mixed with general household waste. Disposing of this product correctly will help to save valuable resources and prevent any potential negative effects on human health and the environment which could otherwise arise from inappropriate waste handling. Please contact your local authority for further details of your nearest designated collection point.

Wersja 04.02.2017

1. CE declaration of conformity



2. Check screen box for components

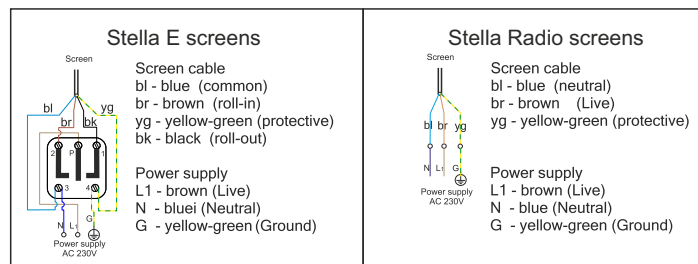


1*) wall switch for Stella E screens, radio transmitter for Stella Radio only

2*) SET bundles only

3*) additional spacer to be utilised for screen installation at bellied (not flat) walls/ceilings

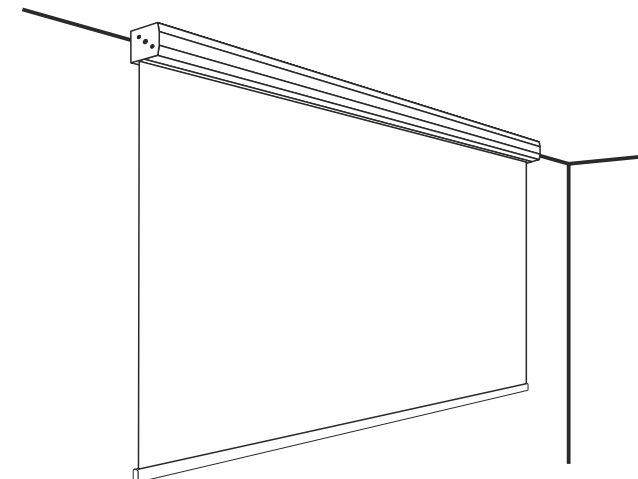
3. Electric installation



4. Screen installation at the wall or ceiling

See other page

Projection screens Avers Stella



AVERS
SCREENS

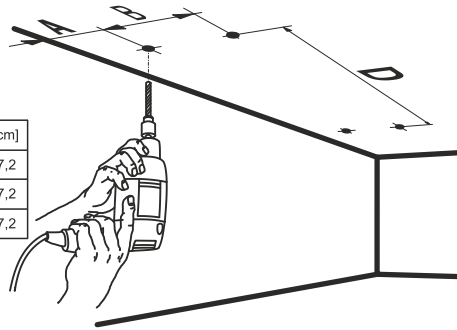
User's manual

Watch this manual carefully before you begin to use the screen.



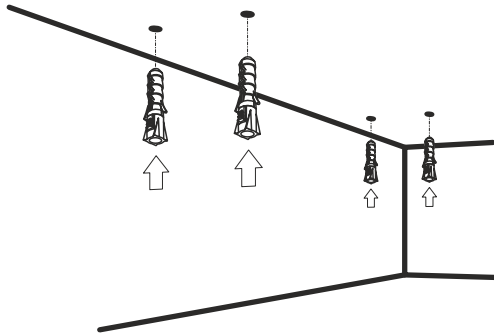
Screen installation at ceiling

1

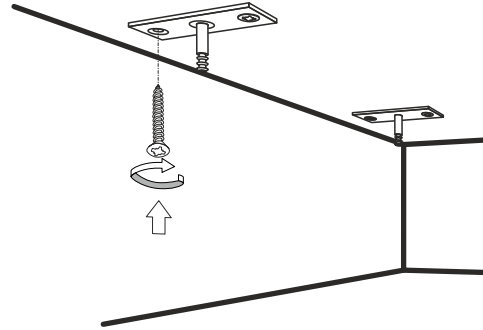


Model	A [mm]	B [mm]	D [cm]
Stella 180	10	55	187,2
Stella 200	10	55	207,2
Stella 240	10	55	247,2

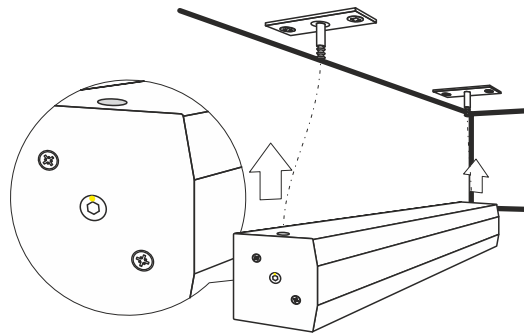
2



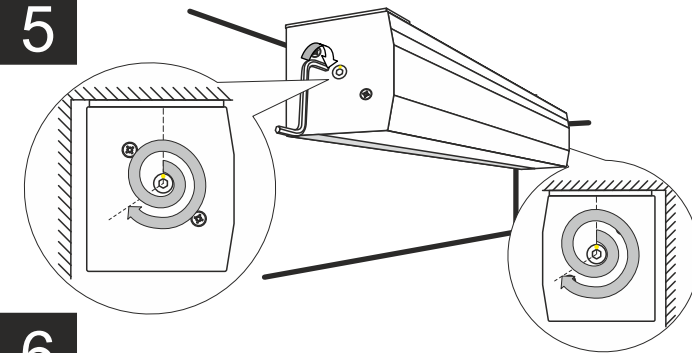
3



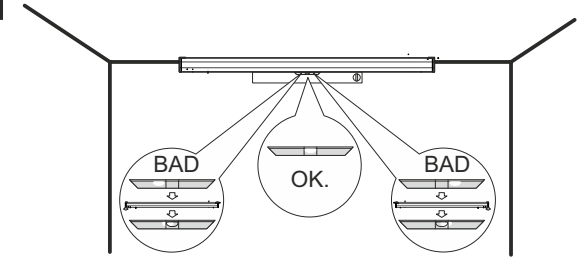
4



5

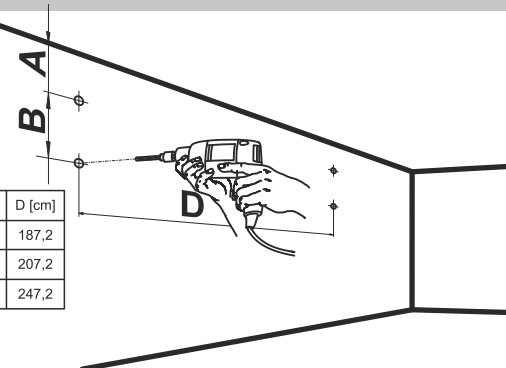


6



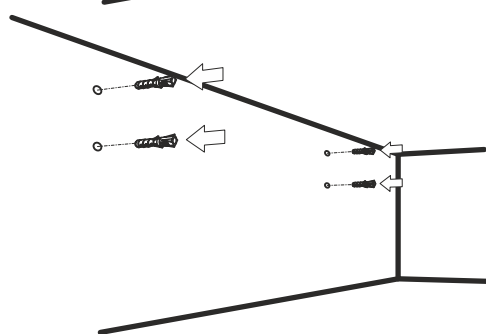
Screen installation at wall

1

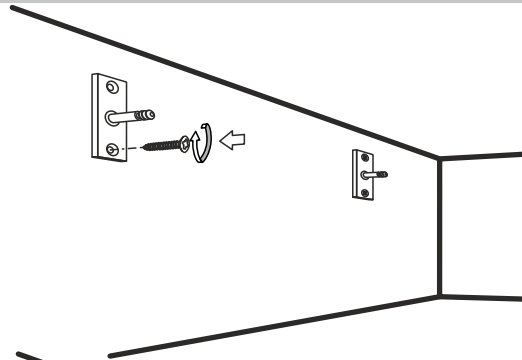


Model	A [mm]	B [mm]	D [cm]
Stella 180	10	55	187,2
Stella 200	10	55	207,2
Stella 240	10	55	247,2

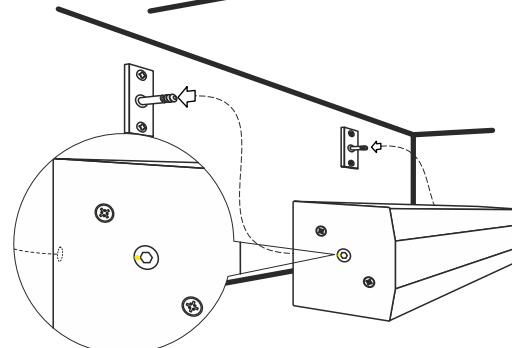
2



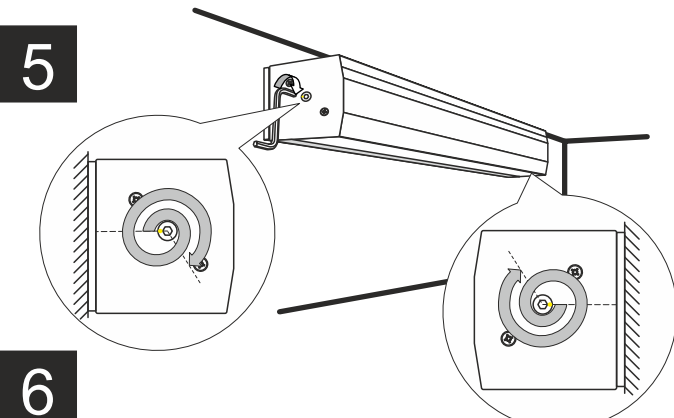
3



4



5



6

